

# **SiS Multimedia**

▶ **Installation**

- step-by-step instructions to help you complete the installation task.

▶ **SiS SVGA Setup**

- Procedures on setting up SVGA on both Window 95 and Window 3.1

▶ **SiS Multimedia Manager**

- Introduction to SiS Multimedia Manager

▶ **SiS MMPlayer**

- View a CD movie with SiS MMPlayer.

▶ **Center Screen**

- Adjusting the position of the display screen

▶ **SiS Gamma Correction**

- Utility for changing the color and brightness of the monitor screen.

- This utility only supports SiS 5597/5598 or any of the follow-up SVGA.

▶ **SiS TV-OUT**

- Utility for connecting the TV and computer.

- This utility only supports SiS 6326 or any of the follow-up SVGA.

▶ **Technical Support**

- Customer Service and technical support information.

# **Silicon Integrated System Corporation (SIS)**

Silicon Integrated System Corporation was founded in 1987 at the Science-Based Industrial Park located in Hsin-Chu, Taiwan. Today, SiS is not only the largest semiconductor company in Taiwan, but also the first company to commercialize the 386DX-33 MHz core logic chip set. SiS has been very successful in capitalizing on state-of-the-art IC technology to meet the needs of the information industry. The company is highly focused on the development of mainstream logic products. The following is a whole family of leading-edge products:

## **Desktop Chipset**

5601	Pentium Pro System/AGP/Memory/PMU/PCI/ISA/Master IDE/KBC/RTC Controller.
5602	Pentium Pro System/VGA/Memory/PMU/PCI/ISA/Master IDE/KBC/RTC Single Chip Controller
5597/5598	Pentium PCI/ISA with Graphics/Video Accelerator Single Chip Controller
5571	Pentium System/Memory/PMU/PCI/ISA/Master IDE/KBC/RTC Single Chip Controller.
5596/5513	Pentium PCI, Memory Controller and Graphics/Video Accelerator /PCI System I/O
5511/5512/5513	Pentium MP/System/Memory/PMU/PCI/ISA Controller/Master IDE

## **Pentium Mobile Chipset**

5101/5102/5103	PCI/ISA Controller/Enhanced PMU
5107	Win95 PCI Hot Docking
5120	75 MHZ CPU Bus Cache/ACPI PMU/ATA-33 IDE

## **PC Card Solution**

5131	PCMCIA/ISA Controller
------	-----------------------

## **Multimedia Chip**

6326	64-bit PCI 2D/3D Graphic/Video Accelerator with TV-out and H/W MPEG-II Video Decoder
6225	64-bit PCI Graphic/Video Accelerator with H/W MPEG-I Video Decoder
6215	64-bit PCI Graphic/Video Accelerator with Video Playback

## **SRAM**

8132	(32k x 32) 3.3V synchronous Pipelined Burst SRAM
8164	(64k x 32) 3.3V (LVTTTL) Synchronous Pipelined Burst SRAM

## Installation

SiS Multimedia Package provides an industry standard InstallShield Wizard to guide user step-by-step throughout the installation process. You should have no problem completing the task even if you are not a computer expert. The installation process on Window 95 are slightly different than the Window 3.1, please select a window system applies to you:

- ▶ **Window 95**
- ▶ **Window 3.1**

## Window 95 Installation

1. Boot up Windows using standard VGA mode (640 X 480, 16 color, 60 Hz).
2. Click Start menu and select **Run** menu item.
3. In Run dialog, set the source execution file (e.g. A:\ setup.exe), then press OK.
4. Follows the directions appeared on the screen to completed the installation. If you are not a computer expert, just use the default setting by click **next** or **OK** to finish the installation.
5. This Setup procedure will create a SiS Multimedia Vx.xx program folder which contains at least one of the following items: Multimedia Manager, SiS MMPlayer, Center Screen.
6. A setup successful dialog will appear when setup completed, user may choose to restart the system right away or later.
7. After restarting, Window 95 will run on 640 x 480, 256 color, 60 NI. There will be three items, Display Modes, SiS TV-OUT and SiS Gamma Correction, added depending on the mode setting.

(NOTE: This utility support one-step setup, so SVGA drivers will be installed by default.)

### Display Driver Installation:

- This is a standard procedure only to install SVGA drivers and SiS DirectDraw drivers.

1. Click on the Start menu, select **Control Panel** from Settings group.
2. Choose the **Display** icon.
3. Select **Settings** index in the Display Properties sheet  
(NOTE: You may use the shortcut to get into **Settings** by clicking the right mouse button and select **Properties**)
4. Click on **Change Display Type** button
5. Select **Change** button in Adapter Type group
6. Click on **Have Disk** button.
7. Insert the window 95 Installation Disk into Drive A.
8. Click close when the **Install from Disk** dialog box appears.
9. Select Close or Apply button from Display Properties sheet.
10. A message will appear stating that you must restart the window 95 system, select yes to restart.

## Window 3.1 installation

1. Boot up Windows using standard VGA mode (640 X 480, 16 color, 60 Hz).
2. Select **File** from Windows Program Manager screen
3. Choose **Run** from the File Item List.
4. In the Run Screen, select your driver source eg. A:\setup
5. Follows the directions appeared on the screen to completed the installation. If you are not a computer expert, just use the default setting by click **next** or **OK** to finish the installation.
6. After installation complete, a SiS Multimedia Vx.xx program group will be created and shown on the screen.

## SiS SVGA Setup

SiS **SVGA** Setup is a graphic configuration system that allows the user to set the **resolution**, **color**, **font**, and **refresh rate**. Please click on one of the following window system applies to you:

- ▶ [Window 95](#)
- ▶ [Window 3.1](#)

## **Resolution**

supports super high resolution:

- 640 X 480
- 800 X 600
- 1024 X 768
- 1280 X 1024

## **Color**

supports the following colors:

- 16 colors (4 bpp)
- 256 colors (8 bpp)
- 32K colors (15 bpp)
- 64K colors (16 bpp)
- 16M colors (24 bpp)



**Refresh Rate**

Another word for Frame Rate; the number of frames occurs in one second.

Supports the following rate: 56, 60, 70, 72, 75, 87, 89 (Hz NI)

**Font**

To change the font size of the display screen; large font or small font. The changes will take effects after restart window.

**SVGA**

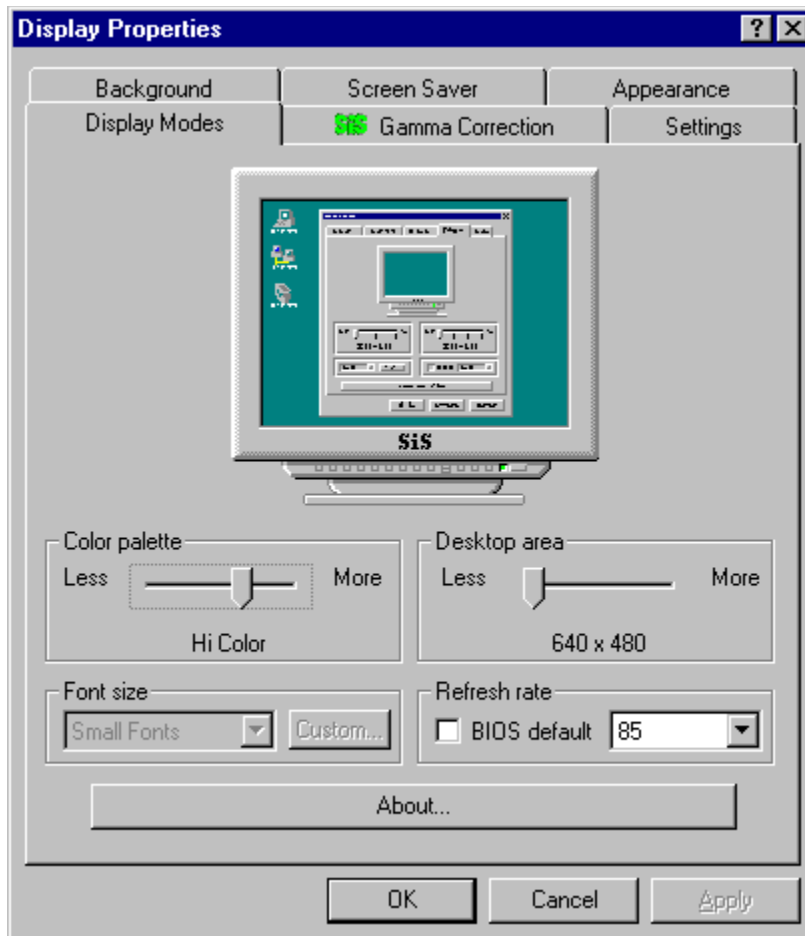
Super Video Graphic Array; a more advanced device used for displaying function and it supports super high resolution graphics modes.

## Window 95 -- SVGA Setup

### Graphic Setup:

SVAG Setup will be located in Display Modes sheet within the Properties (click on right mouse button on the desktop). You may use this utility to change the resolution, colors, frame rate, and font size. However, some of the new setting can only take effect after restarting the Window.

For more details about configuration screen, click on the area where the  appears.

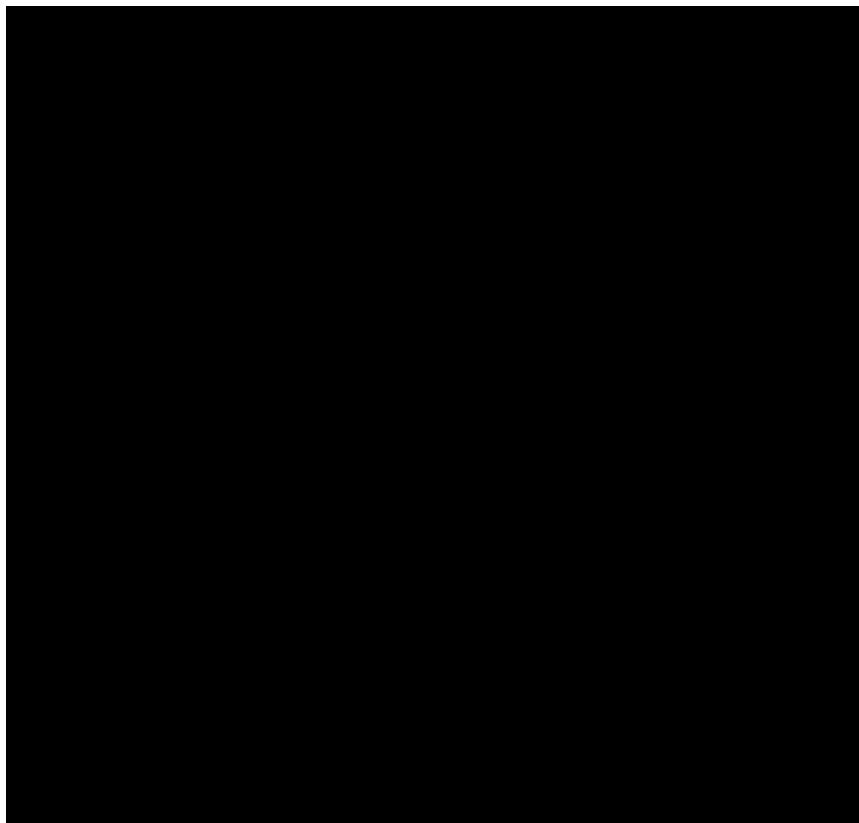


## Window 3.1 -- SVAG Setup

### ▶ Graphics Setup:

- (1) Click on **SVGA Setup** icon from SiS Multimedia program group to enter the **SiS VGA Configuration System**.
  - (2) In SiS VGA Configuration System, select the options you would like to use.
  - (3) Click on **OK** to activate your selections
  - (4) Choose **Restart** Windows to reboot Window with the new setting, or choose **Continue** to resume your current processes.
- (note: some of the new setting will take effect only when you re-boot the Window)

For more details about configuration screen, click the area where the  appears.



### ▶ Power Saving Setup:

- (1) In SiS VGA Configuration System, click on **Power Saver** to enter Power Saver screen.
- (2) In Power Saver, select the options you would like to use.
- (3) Click on **OK** to activate your selections.
- (4) Go back to the SiS VGA Configuration System for Zoom-Key setup.

### ▶ Zoom-Key Setup:

In SiS VGA Configuration System, you may define your own hot keys to zoom-in and zoom-out the screen without entering the setup program. However, there are couple operating principles you need to

remember:

- \* The change of resolution sequence for zoom-in is  
1024 X 768    800 X 600    640 X 480;@    ;@
- \* The change of resolution sequence for zoom-out is  
640 X 480    800 X 600    1024 X 768
- \* You must first zoom-in before zoom-out can take effect. In another word, you can not get a resolution larger than you setup.

Now, follow the steps below for Zoom-key setup:

- (1) In SiS VGA Configuration System, click on **zoom** to enter Zooming Hotkey screen.
- (2) Select the hotkeys you would like to use and click on **enable hotkey**.
- (3) Click on **OK** to activate your selections.
- (4) Now, you may use your own hotkeys to zoom-in or zoom-out the screen.

## **Graphics Setup**

SiS VGA System Configuration provides a friendly interface to configure the settings of your display and gives some information about your system. You may use SiS VGA System Configuration to change your software and hardware settings. In addition to switching screen type, you can change the combinations of resolution, frame rate, and colors. You can also change the fonts, zoom in/out the display, and get the information about **DDC** and memory size, etc.

## **Graphics Setup**

SiS VGA System Configuration provides a friendly interface to configure the settings of your display and gives some information about your system. You may use Display Mode to change your software. In addition to switching screen type, you may change the combinations of **resolution, frame rate, colors** and **font**.



## **DDC**

The Display Data Channel, "DDC", allows the display to inform the host system about its identity and, depending on the level of DDC used, communicate additional levels of display capabilities.

## **Power Saver**

To satisfy the power saving for Green PC, SiS VGA supports the control protocol of [DPMS \(Display Power Management Signaling\)](#) proposed by VESA Monitor Committee. This protocol can reduce the VGA monitor's power consumption. The timer for stand-by, suspend, and off modes can be set from 2 to 30 minutes.

Power saving is done by blocking [HSYNC](#) and/or [VSYNC](#) signals to the VGA monitor. The sources of activation are from the monitoring of keyboard, hardware cursor and/or video memory read/write.

## **Zooming**

You can use zooming to zoom in/out the display between the current resolution and the lower resolutions. For example, if the current resolution is 1024x768, then you can zoom in/out between 1024x768, 800x600, and 640x480. First, you have to enable zooming hotkey, and then choose the key combination to be the zoom in/out hotkey.

## **Screen Type**

You can change the type of the display screen : standard screen or virtual screen. SiS Multimedia World supports a built-in virtual screen mode up to 2048x2048 resolution. You can also change the settings of the virtual screen in **Screen Setup**. changes will take effect after you restart windows.

You can view the information of DDC and memory size. Click on the information you selected.

**DDC**

The Display Data Channel, "DDC", allows the display to inform the host system about its identity and, depending on the level of DDC used, communicate additional levels of display capabilities.

**Memory Size**

Show the memory size (1MB, 2MB, or 4MB) on the VGA card.

## Virtual Screen Setup

When you change the display screen type to virtual screen, you can also specify its screen size. The default virtual screen size is provided, but you can also change the screen size by using



to increase/decrease [Width](#) and [Height](#) field. The corresponding changing of the screen size will show on the right side. SiS Multimedia Package supports a built-in virtual screen mode up to 2048x2048 resolution. The changes will take effect after you restart windows.

## **Physical Screen**

You can set the physical screen position which is the relative position of the physical screen in the virtual screen. This field is enabled only when you are in virtual screen mode. The changes will take effect after you restart windows.

Press **OK** to accept the changes you made. You need to **Restart Windows** so that the changes will come into effect.



Press **Cancel** to give up the changes you made.

Press **About** to show the about dialog box.

## SiS Multimedia Manager

This SiS Multimedia Package will create a small **SiS Multimedia** icon on the corner of the screen and it contains at least 2 icons depending on what applications you have loaded into the driver. You may click on the Multimedia Manager to bring up a pull down menu or click on any other icons you want to apply. The menu includes a list of all applications and will give you choices of either opening a application or exiting the program. This package was intended to give user a shortcut to bring out any application existing within Multimedia Manager.

[Here is the outlook for Multimedia Manager:](#)



## SiS MMPlayer (Software MPEG)

SiS MMPlayer is a more advanced application program that provides a VCP-like (Video Cassette Player) interface. This new program promotes the Software MPEG playback to a better and friendlier environment for the user. However, you must first install **Software MPEG** decoder (eg. Xing) before you can start SiS MMPlayer.

Click on any of the following topics for more information:

- ▶ [SiS MMPlayer Outlook](#)
- ▶ [Control Functions](#)
- ▶ [Video Functions](#)
- ▶ [Audio Functions](#)
- ▶ [Display Panel](#)
- ▶ [VCD 2.0 Functions](#)

## **Software MPEG**

The popular name for ISO/IEC DIS 11172, the video compression standard developed under the auspices of the International Standards Organization (ISO) by the **M**oving **P**ictures **E**xperts **G**roup.

## SiS MMPlayer Outlook

Here is the outlook of SiS MMPlayer. It includes four groups of operating buttons and two display panels.

For more detailed information, click the area where the  appears.



After installed the MPEGII Video Playback, you have created a **SiS MPEGII** program group which contains one icon --- SiS MMPlayer. Currently, SiS MMPlayer does not implement audio (most of the audio function buttons support only VGA 6225). Therefore, please turn off the **rate control** in the Configure (located in the Menu button). Follow the steps below, you will find this application not just easier to use but also more functional.

- ▶ Choose the **SiS Multimedia Vx.xx** from the START menu.
- ▶ Select **SiS MMPlayer** icon and an VCP-like icon will appear.
- ▶ Click on the **Menu** button to open a file or CD movie.

Displays the playing status of current file.

Show the user where is the current position and how far is it from the end of the file.



This function includes Power, Menu, Minimize and Eject.

This function is used mainly for playing a CD, it includes: Play/pause, stop, step fast backward, fast forward, slow, search, to start, to end, mark in, and mark out.

This function is mainly used for the sound of the CD, it includes: Volume control, Audio and mute.  
However, most of the buttons are only supported by VGA 6225

This function includes number 0-9, enter, previous, next, repeat, memory and Return

**Numbers & Enter** - to select a particular song or file.

## **Rate Control**

Rate control maintains a proper video playback speed. When the rate control is off, MMPlayer Driver will display every video frame in the loaded file.

## Control Functions

The followings are the descriptions for the control buttons displayed on the SiS MMPlayer icon. In addition, there are still some operations which are not well implemented yet. Please wait for further information from your supplier or SiS.

### Buttons

### Description



**Power** - To turn off the SiS MMPlayer. If turning off while playing the CD movie, not only the movie screen will be shut down but also the SiS MMPlayer icon will disappear.



**Menu** - Pops up a pull down menu. This menu contains the following commands:

- a) Open: open a MPEG file.
- b) Close: close a MPEG file.
- c) Open CD movie: open a CD from CD-ROM
- d) Configure: show SiS MPGE Driver Configuration.
- e) Full Screen: maximize the movie screen to the size of the computer screen.



**Minimize** - Minimize this SiS MMPlayer icon and place it in the Tool Bar.



**Eject** - Eject the CD or close the CD-ROM door.

(This button has not been implemented yet)



**Power** - To turn off the SiS MMPlayer.

**Menu** - Pops up a pull down menu.

**Minimize** - Minimize this SiS MMPlayer icon and put it in the Tool Bar.

**Eject** - Eject the CD or close the CD-ROM door.  
(This button has not been implemented yet)

**Play** - Play the loaded file.

**Stop** - Stop the loaded file.

**Step** - Step the loaded video one frame ahead.

**Fast Backward** - Step backward  $1/10$  of the total length of the loaded file.



**Fast Forward** - Step forward 1/10 of the total length of loaded file

**Slow** - Slow down the playing speed.  
(This button has not been implemented yet)

**Search** - Speed up the playing speed.  
(This button has not been implemented yet)

**To Start** - Set the current position to the beginning of the file

**To End** - Set the current position to the end of the file

**Mark in** - Set the start position of the playing range.

**Mark out** - Set the end position of the playing range.

**Volume up** - Increase the volume.  
(This button has not been implemented yet)



**Volume down** - Decrease the volume.  
(This button has not been implemented yet)

**Audio** - Left, Right, Stereo, and Mono are four audio status provided for the user to assist the audio functions.

**Mute** - Mute the audio.

**Previous** - Go back to the previous track, entry, or item.

**Next** - Go to the next track, entry, or item.

**Return** - Return to the selection menu.





**Repeat** - a) Repeat the memorized files when memory function is on. b) Repeat the current loaded file when the memory function is off.

**Memory** - Press Memory after you enter the number of selected files to activate this function.



## Video Playback Functions

The followings are the descriptions for the control buttons displayed on the SiS MMPlayer icon. In addition, there are still some operations which are not well implemented yet. Please wait for further information from your supplier or SiS.

<u>Button</u>	<u>Description</u>
	<b>Play</b> - Play the loaded file.
	<b>Stop</b> - Stop the loaded file.
	<b>Step</b> - Step the loaded video one frame ahead.
	<b>Fast Backward</b> - Step backward 1/10 of the total length of the loaded file.



**Fast Forward** - Step forward 1/10 of the total length of loaded file



**Slow** - Slow down the playing speed.  
(This button has not been implemented yet)



**Search** - Speed up the playing speed.  
(This button has not been implemented yet)



**To Start** - Set the current position to the beginning of the file



**To End** - Set the current position to the end of the file



**Mark in** - Set the start position of the playing range. If user did not set Mark in position, it will be automatically set at zero which is the beginning of the file.



**Mark out** - Set the end position of the playing range. If user did not set Mark out position, it will be automatically set to the end of the file.

## Audio Functions

### Volume controls:



**Volume up** - Increase the volume.  
(This button has not been implemented yet)



**Volume down** - Decrease the volume.  
(This button has not been implemented yet)



**Mute** - Mute the audio.

### Audio control:



**Audio:** (This part of functions are only supported by VGA 6225)

Left, Right, Stereo, and Mono are four audio status provided for the user to assist the audio functions and they are defined differently according to the types of disks.

For Karaoke music disk  
Left: Mono without vocal  
Right: Mono with vocal  
For Dual language disk

Left: **Default Language**  
Right: Second language

**Default Language**

If the user did not specify the second language, then the player will automatically use the default language which is usually English.

## Display Panel



This LCD Panel displays the following playing status of current file.

**-Markin:** The number appears on the display panel represents the beginning location of the file. If user did not set Mark in position, it will be set at 0 automatically and the number will increase as the file goes on.

**-Markout:** The number appears on the display panel represents the ending location of the file. If user did not set Mark out position, it will be set and stop at the end automatically.

**-Audio:** It shows the current audio status: Left, Right, Stereo, Mono.

**-Frame:** It shows the current location of the file.



This Time Panel includes a **Track Bar** and a **Slider** to show the user where is the current position and how far is it from the end of the file. When playing a music CD, it will show the total time for the current song and the slider will move along as the song goes to the end.

**Track Bar**

a rectangle-shape control used to represent the length of the file. The left end indicates the beginning of the file and the right end indicates the end of the file. The Slider underneath shows the current position.



**Slider**

An arrow-like control used to represent the current position within a file and it will move along as the file plays. It can also be used as the Fast Forward button. Instead of forwarding 1/ 10 of the total length, user can move even further by sliding the slider to the position you prefer with the mouse.

## VCD 2.0 Functions

VCD 2.0 functions are mainly used for retrieving and saving one or more selected items of the loaded file. With VCD 2.0 functions, users will be able to repeat a particular part of the file or jump to anywhere without going through the previous items every time. (Please read Memory function for more information). The following list is a detailed description for the VCD 2.0 function buttons.



**Previous** - Go back to the previous track, entry, or item.



**Next** - Go to the next track, entry, or item.



**Return** - Return to the selection menu.



**Repeat** - a) Repeat the memorized files when memory function is on.

b) Repeat the current loaded file when the memory function is off.



activate this function.

**Memory** - Press Memory after you enter the number of selected files to

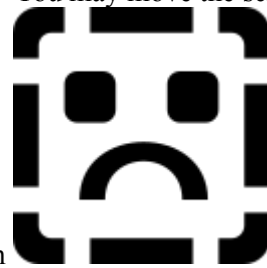
## Memory Function

Mark in, Mark out, Repeat and Memory buttons can be used as a group to do different tasks.

- (1) Demo: user can play a particular part of the file by setting the **Markin** and **Markout** position. Then, it can be played over and over by pressing Memory and Repeat buttons.
- (2) Selecting songs: user can play one or more selected songs by pressing **memory** after insert a number, then click on **repeat**.

## Center Screen

This utility is used to adjust the position of the display screen. You may move the screen right,



left, up and down until it is in the most comfortable position. Click on when you are done, then the application will exit and disappear automatically. If click on



, the application will exit without changing anything.

[Here is the outlook of Center Screen.](#) [For more detailed information, click the area where the ▶ appears.](#)



Press **OK** to accept the changes you made.

## SiS TV Out

SiS TV Out gives the user an opportunity to connect the computer on to TV and use the TV screen as another monitor. This TV Out utility is located in the **Display Properties** (click the right mouse button) and will appear automatically **ONLY** when the TV is connected with the VGA card. One of the advantage of this utility is that the user can connect the cable to TV at anytime, before or after the computer is on, without hurting anything. However, SiS TV Out only support 2 TV systems -- NTSC and PAL. Since the TV system is quite different than the regular monitor, SiS TV Out Utility provides 6 functions for the user to tune up the TV into the best quality. Please click on any topic for more detailed information. This utility only support SiS 6326 or up.

For more detailed information, click the area where the  appears.



## **TV Mode Selection**

- \* Select 640 X 480 (60 Hz) for **NTSC** TV system to get full TV display or 560 X 420 (60 Hz) to get a smaller display screen on the TV.
- \* Select 800 X 600 (50 Hz) for **PAL** TV system to get full TV display or 720 X 540 (50 Hz) to get a smaller display screen on the TV.



## **Screen Position**

Use the arrow buttons to adjust the TV screen to the most comfortable position. The **X** button in the middle means **Default position**.

Move the screen to the right

Move the screen to the left

Move the screen down

Move the screen up

Set the display position to the middle of the screen

**Default Position**

Default Position is usually set at the center of the TV screen.

## **AntiFlicker Mode**

Since the TV mode is quite different than the regular computer screen mode, there may be some noises and flickers appear on the TV screen when connected with the computer. There are five choices in the AntiFlicker Mode to improve the quality of the TV screen: **No filtering, Mild, Medium, Strong and Adaptive**. However, the stronger the AntiFlicker Mode is, the more unclear the TV text will be. The **Adaptive mode** serves as a default that the driver will automatically set the AntiFlicker to the most suitable rate. User should try to adjust the screen to most comfortable mode for the eyes.



## **Y Filter**

Under the Compositive system, there are usually some color strips appear on the bound of window. This section is designed mainly for the Compositive system although it has the same concept and function as **AntiFlicker Mode**. When the Y Filter is on, the image appears the TV screen will be softer. On the other hand, if the Y Filter is off, the image will be sharper.

## **TV Mode**

This section is used to turn On or Off the TV output. If the TV mode has been turned on, the display **frame rate** will be force to set at 60 Hz. User may reset the frame rate by following the steps below:

- \* First, turn off the TV output and close the Display Properties.
- \* Open the **Display Properties** again.
- \* Click on **Display Modes** and select the frame rate you prefer.

## **Frame Rate**

The number of video frame occurs on the screen in one second. (Hz = Frames/second). SVGA supports the following rate: 50, 60, 70, 72, 75, 87, 89 Hz NI.

## **Color Calibration Tuning**

Some of the color TV monitor will turn to black and while when first time use our TV Out function. There are two sliders in this section to help user to tune up the color output until the TV monitor appear color. There are two parts in the tuning function: Fine tune and Coarse tune. The range for fine tune is (-16, 16), the range for coarse tune is (-32, 32)

## **NTSC**

National Television System Committee; The American standard for color television broadcasting signals. SiS TV Out only support 640 X 480 (60 Hz) and 560 X 420 (60 Hz).

**PAL**

**Phase Alternation Line;** the European standard for color television broadcasting signals. SiS TV Out only support 800 X 600 (50 Hz) and 720 X 540 (50 Hz).

## SiS Gamma Correction

SiS Gamma Correction located in the Display Properties but will only appear under High color and True color. This application is designed for the user to adjust the TV display quality and it emphasize on changing the color and brightness of the TV screen. Click on any of the following topics for detailed information. This utility only support SiS 5597/5598 or up.

- ▶ **Setting Gamma**
- ▶ **Default**
- ▶ **Brightness**

For more detailed information, click the area where the ▶ appears.



## **Setting Gamma**

This function is designed for the user to adjust the color of the display screen by changing the RGB (Red, Green, Blue) gamma value. The default values which is the most comfortable rate for CRT display is 1. However, user may change the value according to their preference. When slider moves to the right, the color of corresponding signal will decrease while the value of the gamma increases. On the other hand, if the slider moves to the left, the color of corresponding signal will increase while the value of the gamma decreases. When moving RGB slider, all three color will be changing at the same value.



The number indicates the gamma values of the corresponding RGB (Red, Green, Blue) signal.

The three lines in the graph represent the gamma values of the corresponding RGB ( Red, Green, Blue) signal.

You may change the gamma values of the RGB (Red, Green, Blue) signal by moving the slider

## **Brightness**

This section is designed for the user to change the brightness of the TV screen. You may adjust the screen brighter or darker according to your preference by moving the slider to either left or right. The number next to the track bar indicates the brightness of the TV and it is set at 0 when the slider is in the center of the line. When the slider moves to the right side, the number gets larger and the screen will turn brighter. When it moves to the left side, the number gets smaller and the screen will turn darker. Please adjust the brightness to the most comfortable rate for your eyes.

**Default**

This default program will set the values of the RGB (Red, Green, Blue) signal to 1.00 which is most commonly used for regular monitor. You can click on display to return to the default value. However, this function only support the monitor display screen.

## **Technical Support**

Silicon Integrated System Corporation is committed to provide its customer with the greatest possible technical support for their specific needs. Although headquartered in Taiwan, SiS is an international company. The globalization is reflected in the customer service strategy and infrastructure. To access the world-wide customer base, the company has sales and technical support capabilities in the United States, Taiwan, Hong Kong, and Japan. In addition, a broad-based affiliate support system is also established for Northern America, Europe, and Korea. We encourage your feedback regarding SiS Multimedia Package, please contact us for any questions, comments and suggestion, Thank you!!

### **International technical support**

**United States**                      240 North Wolfe Road  
Sunnyvale, CA 94086  
Fax (408) 730-5639  
Email: sisworld@ix.netcom.com

**Taiwan**                                No. 16, Creation Road 1,  
Science-Based Industrial Park  
Hsinchu, Taiwan, R.O.C.  
FAX: 886-3-5778774

6F, No.1 Alley1, Lane 235  
Bao Chiao Road, Hsin Tien, Taiwan, R.O.C.  
FAX: 886-2-9161618

**Hong Kong**                        Unit B, 31F, Wong Tze Bldg.  
71 Hoi Yuen Road, Hong Kong  
FAX: 852-23893570  
Email: sishk@hkstar.com

### **Internet Services**

Technical support and software updated are available from the web site:

**<http://www.sis.com.tw/>**

For information about our product:

**<http://www.sisworld.com/>**

